

INTRO RI

STAFF FRIENDLY SUPERMARKET CABINET.



Intro is a cabinet for large volumes. It is quick and easy to fill with products on castor shelving or pallets.



THE SIGN OF COOL QUALITY

Caring for the future

INTRO RI

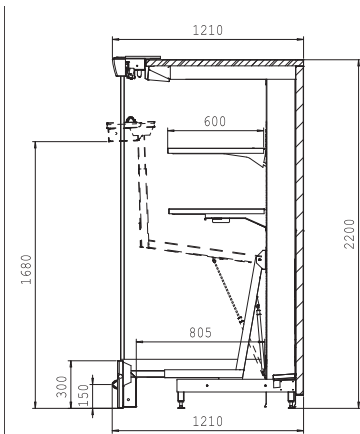
- Castor shelving unit
- Large front opening makes filling of heavy products easier
- Front sill lifts high for ease of access

VISION COLLECTION

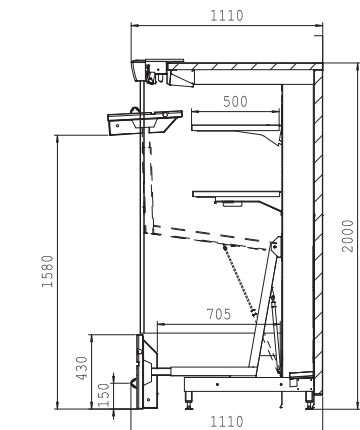
How to read the code:

RI30-121-220-250
 Front height Depth Height Length

Measures are centimeters.



RI30-121-221-INTRO



RI43-111-201-INTRO

STANDARD FEATURES

- Fan evaporator and expansion valves standard for R404A and CO₂ refrigerant
- Fans
- Defrosting rod
- Defrost water connections for each unit, external diameter 40 mm
- Thermometer
- Overhead light fitting
- Electricity switch box on the top of the cabinet
- Full-length drainage kit
- Standard cover plate Arc

TECHNICAL DATA

Front height	300 or 430 mm				
Height	2010 or 2210 mm				
Air Temperature	+2...+4 °C or +4...+8 °C	Min power input W	Max. power input W	Length	Depth
					¹⁾ Refr. area m ²

RI30-111-201-188	756	876	1875	1107	3.2
RI30-111-201-250	970	1114	2500	1107	4.3
RI30-111-201-375	1430	1646	3750	1107	6.4
RI30-111-221-188	756	876	1875	1107	3.2
RI30-111-221-250	970	1114	2500	1107	4.3
RI30-111-221-375	1430	1646	3750	1107	6.4
RI30-121-201-188	756	876	1875	1207	3.8
RI30-121-201-250	970	1114	2500	1207	5.0
RI30-121-201-375	1430	1646	3750	1207	7.5
RI30-121-221-188	756	876	1875	1207	3.8
RI30-121-221-250	970	1114	2500	1207	5.0
RI30-121-221-375	1430	1646	3750	1207	7.5
RI43-111-201-188	756	876	1875	1107	3.2
RI43-111-201-250	970	1114	2500	1107	4.3
RI43-111-201-375	1430	1646	3750	1107	6.4
RI43-111-221-188	756	876	1875	1107	3.2
RI43-111-221-250	970	1114	2500	1107	4.3
RI43-111-221-375	1430	1646	3750	1107	6.4
RI43-121-201-188	756	876	1875	1207	3.8
RI43-121-201-250	970	1114	2500	1207	5.0
RI43-121-201-375	1430	1646	3750	1207	7.5
RI43-121-221-188	756	876	1875	1207	3.8
RI43-121-221-250	970	1114	2500	1207	5.0
RI43-121-221-375	1430	1646	3750	1207	7.5

¹⁾ With 2 shelves and bottom plate



Standard shelf lighting.



Standard cover plate.



OPTIONAL EQUIPMENT

- Expansion valves for other refrigerants
- Energy saving fans
- Mirrored end unit
- Partition unit
- Bumper trim for end unit
- Shelf with console 300, 400 and 500 mm
- Shelf lights
- Holders, dividers etc.
- Night curtains motorised or manual
- Automatic control system
- Extension kit
- Ticket strip holder
- New curved form of shelf consoles